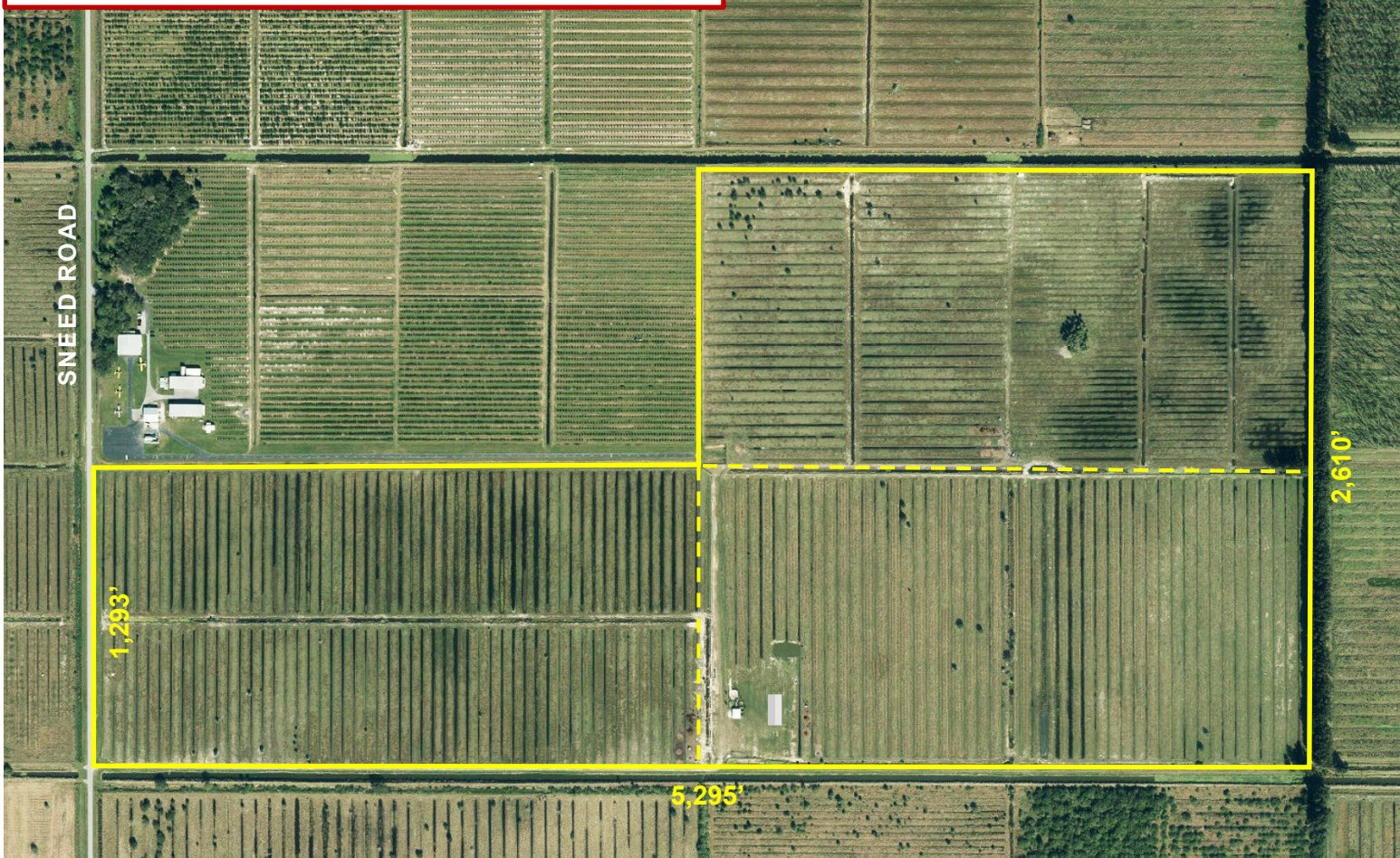




235±ac Pasture

Sneed Road, Saint Lucie County, FL

- 40' X 100' New Pole Barn
- High Quality Cattle Working Pens
- Excellent Perimeter & Cross Fencing
- Former Citrus Land, 50% of Beds Leveled
- Recently Planted in Bahia Grass
- 2 Artesian Wells, Efficient Drainage
- Ag Exempt Taxes for 2020: \$6,685.
- 1,293ft Paved Frontage by 5,295ft Deep
- 3 Parcels: PID #s 2222-331-0001-000-2, 2222-431-0001000-9, 2222-411-0001-000-7



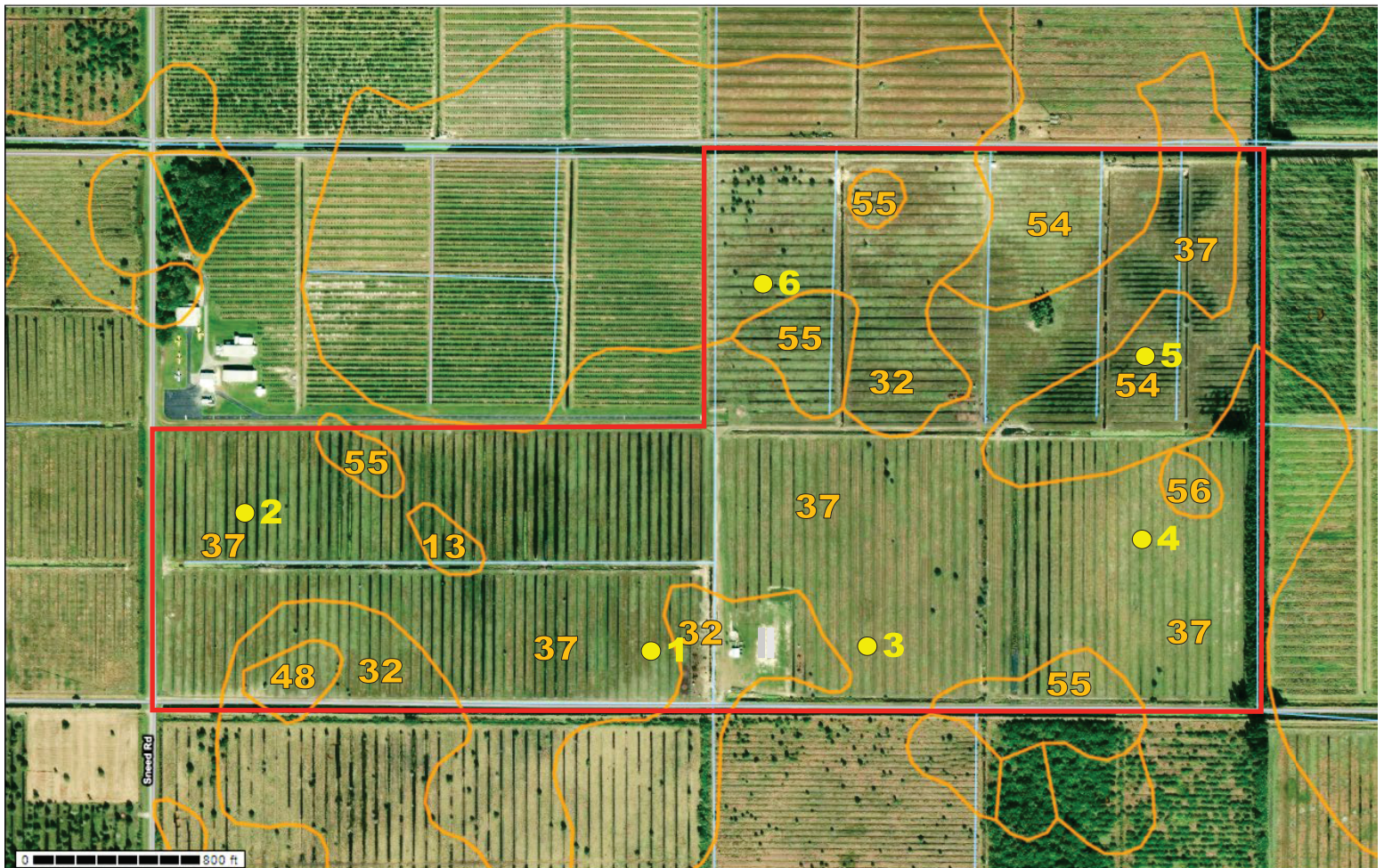
➤ **Viewings by Appointment Only ~ Call Mark Walters: (772) 201-5650**



**mark walters
& company**
real estate brokers & auctioneers

www.waltersco.com • email: mark@waltersco.com
531 South US Hwy 1, Suite B • Fort Pierce, FL 34950
Office (772) 468-8306 • Cell (772) 201-5650 • Fax (772) 497-5096

Soil Map



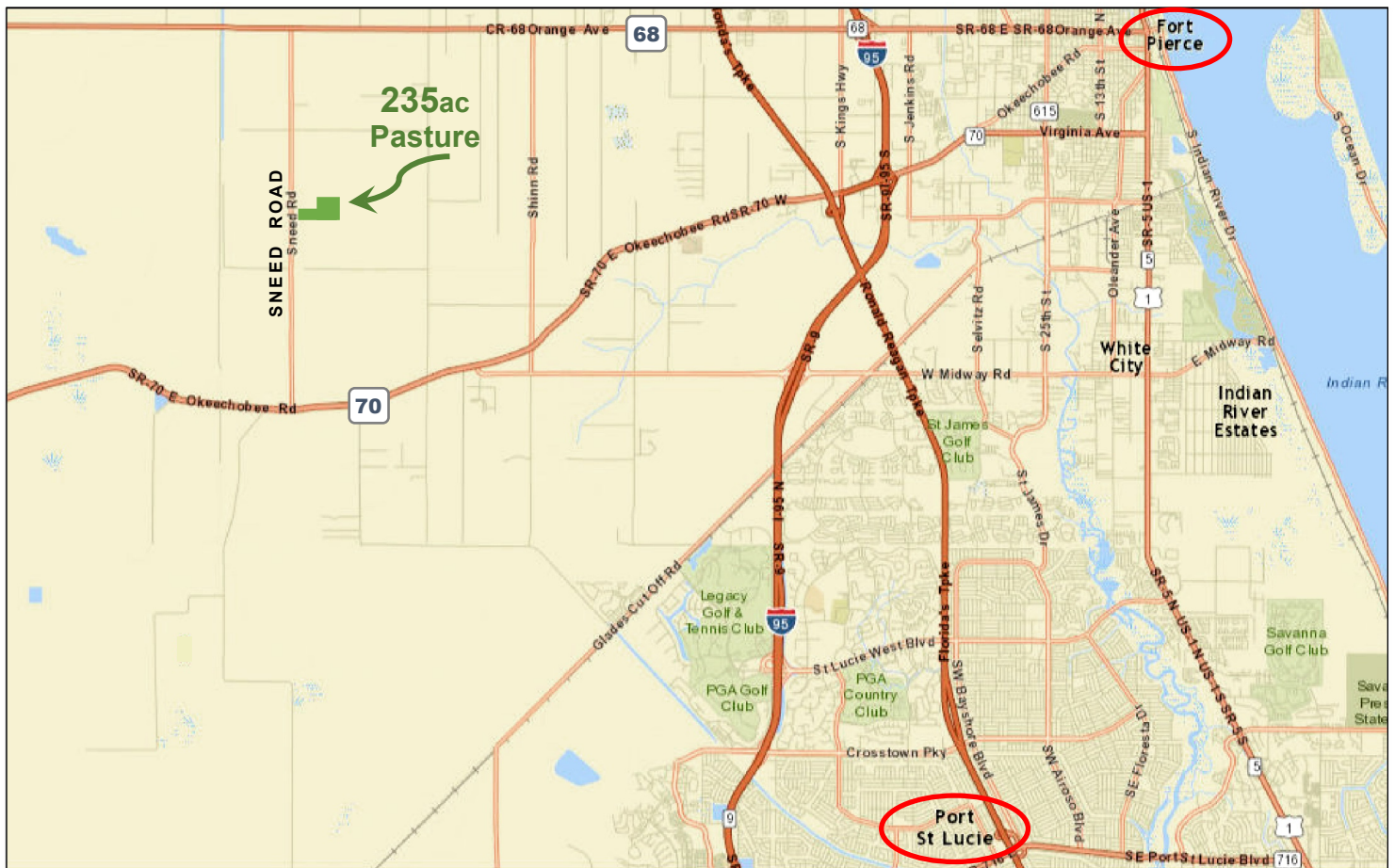
No.	Type	Potential*		
		Crops	Citrus	Pasture
13	Floridana Sand	High	High	High
32	Pineda Sand	High	High	High
37	Riviera Sand, depressional	High	High	High
38	Riviera Fine Sand	High	High	High
48	Wabasso Sand	Medium	Medium	Medium
54	Winder Sand, depressional	High	High	High
55	Winder Sand, loamy	High	High	High
56	Winder Variant Sand	Medium	High	High

* If a well-designed and maintained water control system that provides rapid removal of excess water during heavy rains is installed.

● 1-6: Soil Tests, May 2019
Results Available on Request



mark walters & company
real estate brokers & auctioneers



From I-95: From Exit #131 at Orange Ave / SR 68, go west approximately 8.3mi to Sneed Rd, then turn left & go south 2.5mi to Property and sign on left.

\$1,665,000.

W
& CO.
mark walters & company
 real estate brokers & auctioneers

www.waltersco.com • email: mark@waltersco.com
 531 South US Hwy 1, Suite B • Fort Pierce, FL 34950
 Office (772) 468-8306 • Cell (772) 201-5650 • Fax (772) 497-5096